

# KEN NEWMAN SCULPTURES

Issue 27  
Winter 2016

NSS AAA SAA AA

## HAPPY NEW YEAR—A LOOK AHEAD TO 2016

As the new year begins, we find ourselves with family in California getting ready for three shows, two in Arizona and one in La Quinta, California. We are grateful for all the success we have since starting our full-time art business over 20 years ago. This next year, will be challenging as we navigate our growing family—yes we are adding a grand-puppy (Cali) to the two granddaughters and three daughter-in-laws. We appreciate you and your connection to either us personally or professionally and wish you and your families a healthy, peaceful and Happy New Year!  
We love hearing from you, so keep in touch.

## GO BIG OR GO HOME

In 2016, the process of enlarging [Well Worn](#) and [The Last Whistle](#) will begin. This will take the majority of 2016 and 2017, along with completing a couple other monumental proposals.



If you know of an individual, community or company interested in one of these monumental sculptures, contact us. There may be some cost savings depending on the timing of castings and installation locations. We plan to take images of the enlargement process and post on-line for those interested in viewing the process. The first foam enlargement will begin in late January on [The Last Whistle](#).

As promised several years ago, those who purchased the small [Well Worn](#) sculpture (sold out since 2011) will receive a piece of the original mold. The scan is being scheduled this January and until complete, the mold will not be destroyed, just in case we need to pull another wax for the enlargement scanning. We still have the list of your preferred section of the mold.

We are still looking for anyone interested in reselling [Well Worn](#), we have several people interested in purchasing this sculpture on the secondary market.

We are looking forward to this monumental challenge and believe the sculptures will be well received.



## ~ ART QUOTE ~

*Sculptures add a unique and fresh look to different areas in your home or business. The sculpture's composition, posture and attitude has a presence, as with all art, it should not just fit in, but command its space.*

~ Ken Newman

## SHOWS AND EXHIBITIONS

### [Watertown Art Walk, South Dakota](#)

Now through April 2016

"Taking Attendance" is for sale through this program

### Arizona and California Shows!

#### [La Quinta Art Festival](#)

La Quinta, California

March 3-6, 2016

#### [Scottsdale Art Festival](#)

Downtown Scottsdale, Arizona

March 11-13, 2016

#### [Animalia Exhibition](#)

"The Rat Race"

Loveland Art Museum, Loveland CO

June 11-August 21, 2016

#### [Palo Alto Festival of the Arts](#)

University Ave, Palo Alto

August 27-28, 2016

Watch for Updates on our Website [Calendar](#)

If you are reading this in print, visit our website and find this Newsletter to view [ONLINE](#) and enjoy the LINKS. .

## THE RAT RACE



22x9x10 Edition of 22 Bronze on Walnut

Using the sculptural kangaroo rat (bullet shaped heads, long legs and tails) as subjects, each is jockeying for position. Who's the best? Who's the hungriest? And who's the most focused?

The leader's seed pockets are full. Second place has one seed pocket full and is grabbing the leader's front foot and is kicking his leg. The one behind has no seeds and is leaping over #1 and #2, in a desperate attempt to gain an advantage, while pulling on the leader's ear and the other's eyelid.

**The Rat Race** isn't for everyone; someone retiring, someone just entering the race, or someone who just enjoys being #1, while everyone is trying to get a piece of you.

The sculpture was juried into the 9th ART Idaho Biennial, held at The Art Museum of Eastern Idaho by Seabring Davis, Editor of Western Art and Architecture.

## A DOG FOR ALL SEASONS

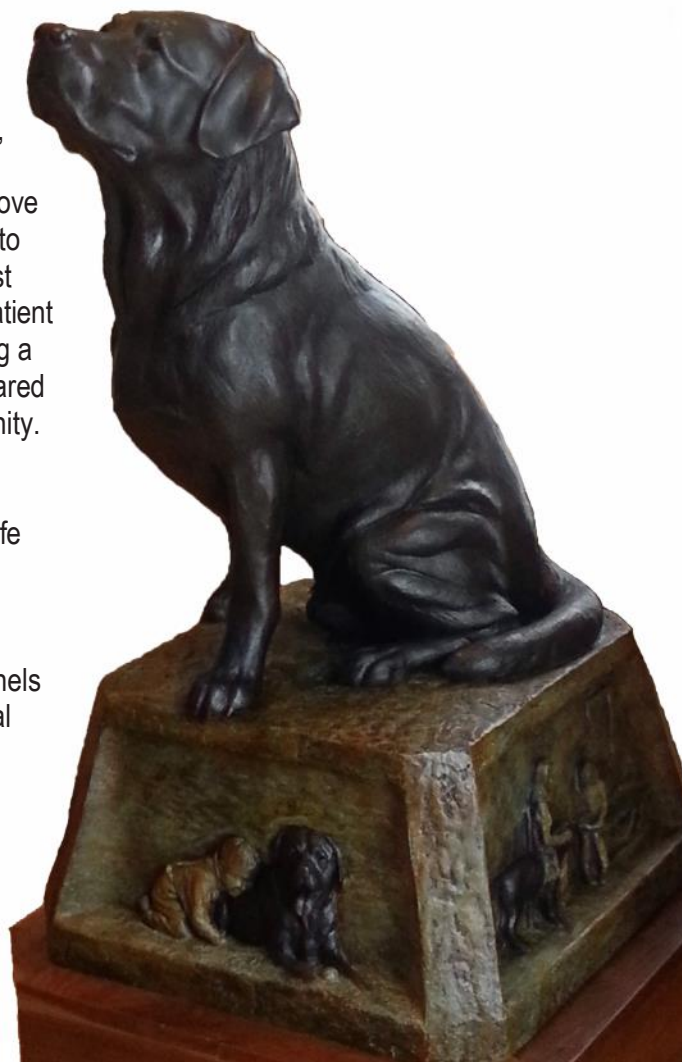


If you are very lucky, a great dog may grace your life. They move beyond a companion to a true friend and most importantly they are a patient teacher. Thus providing a lifetime of memories seared into ones heart for eternity.

Available  
1/3 Scale and Over Life

Order Yours with  
Personalized Relief Panels  
Walnut Base Optional

208 337-8408  
© 2015



## ART ESTATE PLANNING

We recently came across this article on [Creating an Estate Plan for your Art Collection](#) by Artwork Archive. As our collector base increases, we think it is important to share this type of information with you. It starts by stating “Collecting art is less about documents and appraisals and more about passion and a genuine love of the craft. If you’re feeling behind on the management of your art collection, you’re not alone. Many art collectors do not consider their art collection as a part of their will until a later stage. When you decide to plan the future of your art collection and your estate, you have a few options.”

We have found that many collectors are thinking ahead, we recently had a collector allow us to insure a sculpture was placed in a museum by including the work in their will. The Artwork Archive article explains: “How to discuss your Art Estate Plan with your family and describes the three options you have in planning your art estate: Sell your collection, Leave your artwork to your heirs in an LLC or Donate your artwork”. Enjoy the link above or Google “Artwork Archive—Creating an Estate Plan for your Art Collection”.

### CONFLUENCE OF BLUE - COMING TOGETHER FOR THE GREATER GOOD

Each heron in **Confluence of Blue** captures their characteristics and comradery when coming together for the “Greater Good”.

The heron’s postures suggest: balancing a central vision, calm and focused, looking forward, respecting the past, making connections to one another, bringing goals to fruition and celebrating success.

The birds are orientated N-S-E-W to suggest the great influence and impact of a community and its unlimited boundaries. The heron that flies above reflects success supported by the efforts of the community below, as the mighty oak reaches to the sky in support.

As the bird’s postures developed, I came to understand they reflected six important elements of life itself.

**Focus** – Perfect to remind us to focus on the goal to achieve success in life and business. Take your focus away and time is lost.

**Relationships** – Posture suggests of two birds becoming one, Unity. One bird is looking down, maintaining a connection to its past history and culture, the other looks up and out to the future. The draw of two opposites.

**Perseverance** – When the going gets tough, the tough get going and remains focused and balanced in the tough times.

**Celebration** – Shares and celebrates the success with others.

**Success and Gracious Gratitude**– As one reflects on life, I am so impressed by those who share their success with gracious generosity.

In hindsight, **Confluence of Blue** speaks to my need to remain connected to nature. Being a witness to the layers of nature can provide insight to unraveling the layers of a life’s journey, with art providing for that opportunity to share.

**Confluence of Blue** can be based for interior or exterior installation.

Perfect for a commercial business, home or outdoor courtyard.

*The Great Blue Heron, has achieved iconic status in many different cultures throughout history.*



“Each new day should be an adventure. The artist should be left free to explore and comment in a personal way through whatever means. Each work is individual and should be bought and sold on its own merits, not a signature style.”

~ Olga Kitt. Artist

## YOUR WORDS... THANK YOU FOR SHARING

~ We loved hearing your story and admire your courage and determination to follow your passion. Enjoy the holidays. We are thankful for the beauty you have brought to our home and the joy we have in living with your creations. JDT—MD

~ We love our NEW Newman's, Diane thinks the Perry Cabin girls, **Opulence and Essential**, were influenced by your Italy trip. JDM-VA

~ Yes, it was waiting for me at the front door!! I'm SO excited to have this handsome boy, **A Dog for All Seasons Study** living in my house!! Hope to see you again next year. Thank you and Happy Thanksgiving. RMN—NC

~ Our Emma **Attendance Study** is happily residing on our mantle in Easton. HKD—MD

## RETIRING MOLDS IN 2016

Molds are created from each original clay sculpture. The molds are made of latex and surrounded by hemp and plaster, which creates the mother mold. When the final wax is poured and pulled from the mold, our foundry returns the mold to the artist.

We then send a piece of the latex mold to each of the individuals who purchased the sculpture. This is our way of sharing the news that an edition of a sculpture is either sold out, or all the castings are completed.

This year, **Tale of Respect**, **Well Worn**, **Forever Ready** and **Attendance Study** molds will be retired. So if you receive something rubber in the mail over the next six months, it will most likely be a piece of a mold. We will include a description of the mold in relation to your sculpture. You can keep the mold as a souvenir or toss it.

## GALLERY REPRESENTATION

### JENNIFER BELLINGER GALLERY

Ketchum/Sun Valley, Idaho

Tuesday-Sunday 11am-5pm

If you are in Sun Valley/Ketchum this winter be sure to stop by Jennifer Bellinger Gallery, located on 4th Street near Atkinson's Market. The gallery features a wide variety of oil paintings and several of Ken's larger wildlife, figurative and wood sculptures, including the Great and Powerful. The gallery also represents sculptors; Dave LaMure, Leo Osborn, Russ Lamb and Lou Whittaker.

Although we continue to maintain self-promotion as our primary method of selling sculptures, in 2016 we will be entertaining additional gallery representation, so watch for updates.

## FINDING THE LAYERS AND DEPTH IN ART

Art is all in the eye of beholder and sometimes gains clarity when learning the artist's vision and inspiration. Artists can create objects of beauty, but a piece that creates an emotion, poses a question, suggests a view or solution interests me. As a collector I encourage you look a little deeper than the eye or text to find the depth and the layers in a work of art. There are some of my works that are spontaneous, but most are a journey where I learn more than I ever imagined. As I am encouraged to write about my work, it helps me understand why I do what I do—it is an addiction.

Visit my website [www.kennewmansculptures.com](http://www.kennewmansculptures.com) and click on the header called **Sculpture Narratives** and enjoy my thoughts on both wood and bronze sculptures or use this link [Visit Sculpture Narratives](#)

## Links to Videos, Articles and Blogs

[Taking Attendance](#)  
[Commission and Casting Process](#)

[The Great and Powerful](#)

[EyeonSunValley](#)

[Confluence of Blue](#)

[Bluebirds of Happiness](#)

## SAVE A TREE AND CONNECT!

Website [www.kennewmansculptures.com](http://www.kennewmansculptures.com)

Blog [kennewman.blogspot.com/](http://kennewman.blogspot.com/)

Twitter [@newmansculpture](https://twitter.com/newmansculpture)

Like us on Facebook [Ken Newman Sculptures](#)

Google+ [Ken Newman](#)

LinkedIn [www.linkedin.com/pub/ken-newman/14/756/742](http://www.linkedin.com/pub/ken-newman/14/756/742)

Email [info@kennewmansculptures.com](mailto:info@kennewmansculptures.com)

Address 2928 Hwy 71 Cambridge ID 83610

Phone/Cell 208 337-8408

~ **PAYPAL Payment Options Available** ~  
Visa—MasterCard,  
Discover—American Express.

We also LOVE Checks and Bank Transfers!

We offer flexible payment plans with no interest for those needing a little extra time to pay off a sculpture.