

KEN NEWMAN SCULPTURES

Issue 26
Fall 2015

NSS NSG AAA SAA AA

Sit down, grab something to drink and enjoy our Fall 2015 newsletter. This summer found us in drought stricken California on a three show summer circuit and then off to spend time with granddaughter #2 Isla Rose McClendon. Although we won't be returning to the Celebration of Fine Art in Arizona, we will include a couple winter weekend shows in Arizona and California. Watch for show updates on our calendar or send us your email address, we send emails as new works are released or the show/exhibition calendar is updated.

In 1997, we started the art business in Truckee, California, while still a custom home contractor and resort manager. A 15 year business plan was developed and in 2001 we moved to Idaho and have since reached 90% of those original goals. The one goal we promised Emma (our lab) is to find a temporary/permanent studio space so that our 32,000 miles a years is reduced to 15,000. Travel and shows will always be part of the business plan, but these next several years in order to complete the larger sculptures, a working studio is a necessity. Once we know where and when we will invite you to stop by and see the new large works in progress.

~ COMMISSIONS ~

~ The challenge of a commission is to find a client who trusts that you will create something that they will connect to, based on your narrative, not pictures. That emotional connection and the Art will stand on it own when a sculptor is allowed to develop the sculpture without a preconceived concept.
~ The reward is a truly unique piece of Art.

GO BIG OR GO HOME

In 2016, the process of enlarging **Well Worn**, **The Last Whistle** and **Confluence of Blue** will begin. This will take the majority of 2016-2017, along with completing a couple other monumental proposals.

As promised, those who purchased the small **Well Worn** sculpture will soon be receiving a piece of the original mold. The scans are being scheduled at the foundry and until complete, the foundry does not want the mold destroyed, hence the delay.

If you know of an individual, community or company interested in one of these monumental sculptures, contact us. There may be some cost savings depending on timing of castings and installation.

Ken is currently in the process of completing a commission of a **British Labrador** sculpture, an image of the clay precast will be available in early October. It is based on a sitting lab and features four relief panels on the base (depicting a lab flushing, retrieving, with family and service). This is a large sculpture, 41" x 23" x 23", and will be cast (edition of 11) using the lost wax process and can be placed indoors or outdoors. In addition, we will be releasing the bronze study of this lab sculpture in November at the Waterfowl Festival. Dimensions 19Hx10x10, edition of 22.

If you are interested in either of these sculptures, call for details on pre-cast ordering discounts..

SHOWS AND EXHIBITIONS

9th ART Idaho Biennial Exhibition

Art Museum of Eastern Idaho, Idaho Falls ID
August 22 - November 7, 2015
"The Rat Race"

For the Love of Birds

Now through October 2015
Jennifer Bellinger's Gallery, Ketchum ID

45th Annual Waterfowl Festival

Easton, Maryland
November 13—15, 2015

Watertown Art Walk, South Dakota

Now through April 2016
"Taking Attendance"

Sculpture and Wine Experience

Fountain Hills, Arizona
January 14-16, 2016

Watch for updates on our website or
[Calendar](#)

If you are viewing this newsletter online, all the [LINKS](#) in [BLUE](#) will take you to another website where you can view details about shows, sculptures, definitions, etc. Click on LINKS and enjoy!

If you are reading this in print, visit our website and find this Newsletter to view [online](#) and enjoy the LINKS. .

THE RAT RACE



22x9x10 Edition of 22 Bronze on Walnut

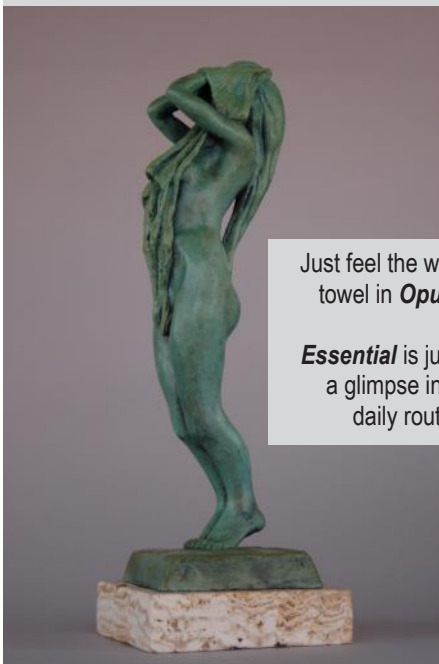
Using the sculptural desert kangaroo rat as subjects, each is jockeying for position. Who's the best? Who's the hungriest? And who's the most focused?

The leader's seed pockets are full. Second place has one seed pocket full and is grabbing the leader's front foot and is kicking his leg. The one behind has no seeds and is leaping over #1 and #2, in a desperate attempt to gain an advantage, while pulling on the leader's ear and the other's eyelid.

The Rat Race isn't for everyone; someone retiring, someone just entering the race, or someone who just enjoys being number 1, with everyone trying to get a piece of you.

This sculpture was chosen for the 9th ART Idaho Biennial at the Art Museum of Eastern Idaho in Idaho Falls. Seabring Davis, Editor of Western Art and Architecture was the juror for this exhibition.

OPULENCE AND ESSENTIAL



Opulence and **Essential** are available as a pair or individually in different patinas. Edition of 22

Just feel the warm lush towel in **Opulence**.

Essential is just that—a glimpse into the daily routine



LAB STUDY

19x11x11
Bronze
Edition 22

4 RELIEF PANELS

Pointing/Flushing
Retrieving
Family
Service

ENGLISH LAB

41x23x23
Bronze
Edition 11

Call for
pricing details
208 337-8408



CREATING ART THAT PROVOKES EMOTION AND SHARES A NARRATIVE ARE IMPORTANT TO ME AS AN ARTIST

Art is all in the eye of beholder and sometimes gains clarity when learning the artist's vision and inspiration. Artists can create objects of beauty, but a piece that creates an emotion, poses a question, suggests a view or solution interests me. I recently started providing narratives of my sculptures on my website.

Here are brief reflections on some of my wood sculptures.

CHECKING THE CACHE— SQUIRREL How does man impact the food source for animals, the acorn sits outside of the squirrel's cache, does man (represented by the Snickers® bar) come between the natural propagation of the forest.? Is it also possible to study it to death?

DEFYING THE WIND Poses the question - how do boundaries (like barbed wire and fences) impact wildlife, nature and man. By using a magpie to represent a species that has broken the boundary (it no longer has a nickel bounty), or at least for now, until the winds of change and new laws are created.

1.75SQFT OF FOREST FLOOR Encourages viewers to take a moment to explore nature. What can you see, feel and hear if you spend a moment, an hour, a day or a week within an specific environment? What can you learn, what do you experience, and how does your perception change?

BIRDS AND THE V's Water hydraulics and the natural flow of water is essential to a healthy environment. These hydraulics are represented in the wood by using the natural cavities of carpenter ants as the swallows work the river. [Visit Sculpture Narratives](#)

CONFLUENCE OF BLUE



45th Annual Waterfowl Festival's Premiere Night
November 12th 5-9pm
Purchase Tickets On-line

<http://www.waterfowlfestival.org/premierenight/>



Visit **Taking Attendance** in Watertown, South Dakota outside Makepeace Jewelers at 27 E Kemp Street, as part of the Watertown's Public Sculpture Program. If you get a chance, stop in the store and say hello to Jill and take a picture with the sculpture and forward it to us via email or social media. Edition of 11.

WATERFOWL FESTIVAL

We are heading across country again in November for the 45th Annual Waterfowl Festival in Easton, Maryland. This remains to be our only wildlife art venue in our schedule and remains one of our most successful shows of the year.

Last year as Featured Artist, we w Ken created **Confluence of Blue** and were treated like royalty. This year we return with Confluence of Blue #4/11 and several of the small blue heron sculptures, **Focus** and **Unity**. We will take orders on these small sculptures and ship anywhere for \$25.

Look forward to meeting and greeting our east coast clients, to avoid the crowds, if you would like a private showing at the WFF show, let us know. If you would like us to bring a particular sculpture with us, let us know we can always stop in and see if the sculpture works in your home.

A portion of the art sales goes to the Conservation of the Chesapeake Bay through the Chesapeake Waterfowl Foundation.

The Great Blue Heron, has achieved iconic status in many different cultures throughout history. Each bird in **Confluence of Blue** captures their characteristics and their comradery when coming together for the Greater Good.

FOCUS

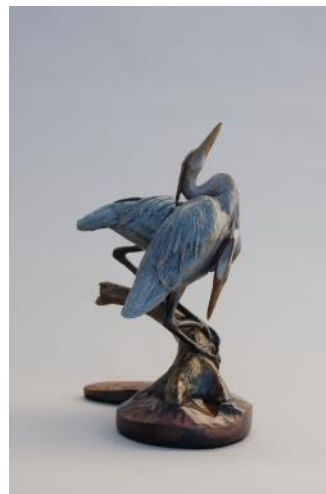
Perfect sculpture to remind us to focus on the goal to achieve success in life and business. Take your focus away and time is gone.

You can't depend on your eyes when your imagination is out of focus.
 ~ Mark Twain



UNITY

This sculpture is the expression of relationships built when we choose to come together. Posturing suggests of two birds becoming one. Although one bird is looking down, maintaining a connection to its past history and culture, the other looks up and out to the future. The draw of two opposites.



YOUR WORDS... THANK YOU FOR SHARING

~ I have shown **Lineal Passage** to friends and they have been very impressed by this glorious piece. They ask me about the birds: are they carved from a different wood and placed there or are they carved right from the natural wood? The question is prompted by how seamlessly they are placed.

I said I would check, but suspect they were added to the piece. Ken would have to be an alien from another universe to carve it from the raw wood.

JM ~ Virginia

~ What a sense of humor you have. We love **Opulence** and **Essential**. We were drawn to the sculpture, and sharing your story just made it real.

BO ~ California

~ Our first sculpture—**Observing Grace** is being moved daily to find the right place for this amazing sculpture. We love it.

SM~ California

~ Showed my friends your sculpture I purchased at the King Mountain Art Fair, they loved it, but even if they didn't, I would still love **Unity**.

DR ~ California

EMMA THE TRAVELING DOG

Our Lab Emma turns 8 this month and in her lifetime she has traveled over 240,000 miles. Below are some things we have heard her say, while tilting her head.

~ I didn't sign up to do 6,700 miles in less than three weeks each year.

~ Where is the water, you promised?

~ Thanks for the leftover interstate food, but look at what it has done to my figure.

~ Why are you not charging the artists for my modeling time?

~ Are you really going to leave me with those two girls in MD and pick me up next year?

~ Lost my favorite blue ball-tosser somewhere between MD and ID, if you find it, please send it to me.

~ It's fall, grouse/chukar season and we are still in California, what gives?

~ While driving, I sleep all day, mom sleeps all night, so guess who gets to entertain me?

HIGHLIGHTS OF SCULPTING ON THE ROAD

~ First time over the border for a show, the 10 Day Calgary Stampede in Canada. Many thanks to artists Adeline and Steve for their hospitality during our stay, we couldn't have done it without them and sculptor Fred Boyer, for his tips on international border crossings..

~ A big shout out to Adonis Bronze, you all are the best. Thanks for the hard work, technical skills and hospitality while we travel through Alpine, Utah on to the next show.

~ We appreciate all the notes and emails from our collectors and art lovers. We love hearing from you and seeing pictures of the sculptures in your homes and offices.

~ Just think we have lived in an RV longer than we have in any home, even our childhood homes. Amazing journey on the road!

Visit our Website, YouTube and Blog
www.kennewmansculptures.com

[Taking Attendance Commission and Casting Process](#)

[The Great and Powerful](#)

[EyeonSunValley](#)

[Confluence of Blue](#)

Most Read Blog Entries

[Irish Garden Shed](#)

[Bluebirds of Happiness](#)

[Abalone Diving](#) and [Surf Fishing](#)

GALLERY REPRESENTATION

JENNIFER BELLINGER GALLERY

Ketchum ID

Tuesday-Sunday 11am-5pm

COLUMBINE GALLERY Loveland CO

Open House Nov 20-21 ~ Miniature to Monumental

SILVER SAGE GALLERY Dubois WY

Open through mid-December Western and Wildlife

SAVE A TREE AND CONNECT!

Website www.kennewmansculptures.com

Blog kennewman.blogspot.com/

Twitter [@newmansculpture](https://twitter.com/newmansculpture)

Like us on Facebook [Ken Newman Sculptures](https://www.facebook.com/KenNewmanSculptures)

Google+ [Ken Newman](https://plus.google.com/+KenNewman)

LinkedIn www.linkedin.com/pub/ken-newman/14/756/742

Email info@kennewmansculptures.com

Address 2928 Hwy 71 Cambridge ID 83610

Phone/Cell 208 337-8408

~ **PAYPAL Payment Options Available ~**

Visa—MasterCard,

Discover—American Express.

We also LOVE Checks and Bank Transfers!

We offer flexible payment plans with no interest for those needing a little extra time to pay off a sculpture.